

CLOVENSTONE

RELAX - ENJOY - RE-ENERGISE



WELCOME TO GARIOCH LODGE

www.clovenstonelodges.co.uk



Welcome to Clovenstone Lodges

A very warm welcome to Clovenstone Lodges, and thank you for choosing to stay with us.

Our lodges are designed to be a peaceful home-from-home, set within the Aberdeenshire countryside and surrounded by woodland and wildlife.

We hope you enjoy the comfort, privacy and space to truly switch off during your stay.

If anything isn't quite right during your visit, please don't hesitate to let me know as soon as possible. A quick message is often all it takes for me to put things right, and I'm always happy to help.

This welcome pack is here to give you all the essential information you need for a safe, comfortable and enjoyable stay, along with a few local tips should you wish to explore.

Most of all, we hope you take the time to **Relax, Enjoy** and **Re-energise**.

Warmest wishes,

Graham



EMERGENCY INFORMATION

For emergencies, please use the details below:



Emergency Services

Police / Fire / Ambulance: 999

Police (non-emergency): 101

NHS 24 (out of hours): 111



Vets

Donview Veterinary Centre
Burghmuir Place, Blackhall Industrial Estate,
Inverurie
AB51 4FW

01467 621429

Monday - Tuesday: 08:00 – 19:00

Wednesday - Friday: 08:00 – 18:00

Saturday: 08:30 - 13:00

24 hours emergency service available



Lodge Contact

If you have any concerns at the lodge or need assistance, please contact:

Graham: 07414 274 004

FIRE SAFETY

Your safety is important to us. In the unlikely event of a fire, please follow the guidance below.



In case of fire

- Leave the lodge immediately
- Move upwind and a safe distance away
- Call 999

Fire extinguishers are provided and should only be used if you feel confident and it is safe to do so.



Important safety notes

- For safety reasons, fires and fire pits are **not permitted** anywhere on site
- Please take care when using cooking appliances and the BBQ



Disposable BBQs

For fire safety reasons, disposable BBQs are **not permitted** anywhere on site.

Disposable BBQs become extremely hot underneath and can cause serious fires and permanent damage when placed on wooden decking. Please only use the provided BBQ and follow the guidance.

These measures help protect our guests, lodges and the surrounding countryside.

A FEW OTHER THINGS...

To help everyone enjoy their stay and to protect the lodges and countryside, we'd appreciate your help with the following.

Looking after the lodge



- Please do not flush wet wipes or sanitary items, even if labelled as flushable, down the toilet



- Smoking (including e-cigarettes) is **not permitted**

Neighbours & surroundings



- Our neighbours include sheep and horses, please give them space and don't feed them



- We ask guests to keep noise to a respectful level, particularly in the evenings

Dogs



- Dogs are very welcome at Clovenstone, but please keep them off the beds.



- Please clean up after your dog and keep them under control, especially around livestock

Safety & wellbeing



- Illegal drugs are not permitted anywhere on site

Fake Tan



- Please avoid using fake tan, as it can cause staining and damage to the hot tub, bed linen and towels.

Thank you for helping us keep Clovenstone Lodges peaceful, safe and enjoyable for everyone.

H O T T U B

Your hot tub is ready for you to enjoy - please follow the guidance below to keep it safe, comfortable and relaxing for everyone. Your hot tub is drained, cleaned, refilled with fresh spring water, sanitised and pre-warmed prior to your arrival.

Temperature

- The hot tub temperature is managed by the control panel on your hot tub
- It will have been set to 38 degrees and should be up to temperature by late afternoon / early evening

During use

- Acrylic glasses only in the hot tub
- Keep the lid on when not in use to retain heat

Important care notes

- Please do not sit or place items on the hot tub lid
- Do not remove the hot tub lid at any point, as this increases the likelihood of the water becoming dirty and the lid being damaged
- Always close the lid carefully after use

How it works

- A short how-to video is available on our website



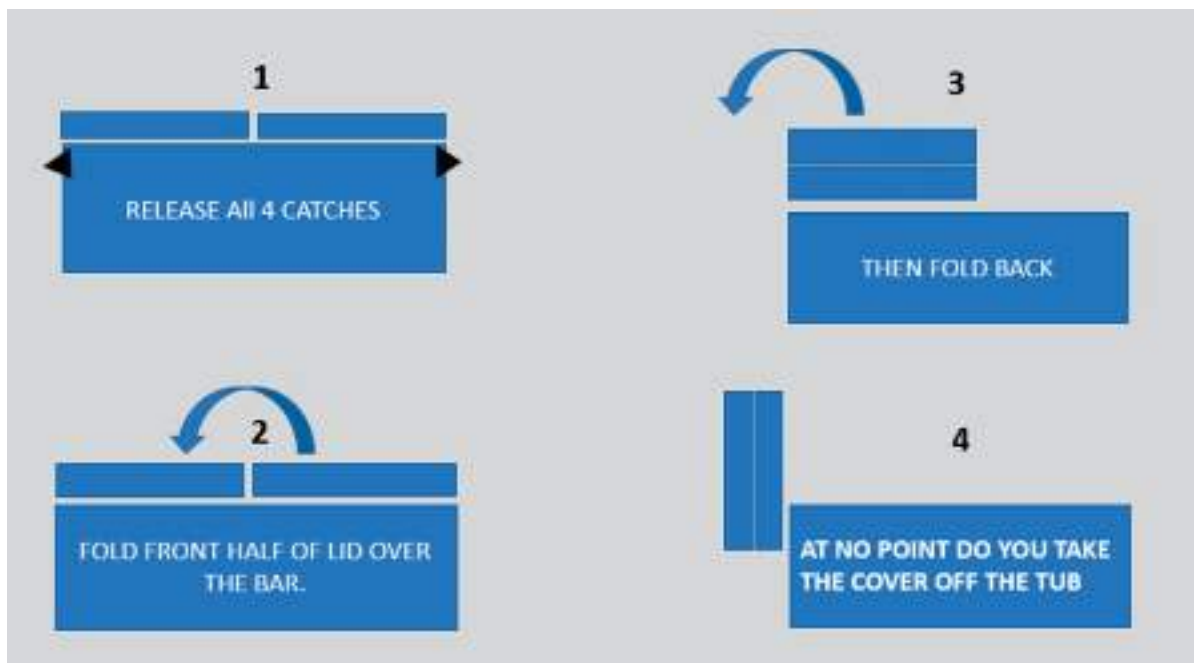
H O T T U B



Use the dial to control:

- Jets (on/off)
- Lights (on/off)
- Temperature (warm/cool)

Lifting the Lid:



Need help?

If anything doesn't seem quite right with the hot tub, please let Graham know as soon as possible so it can be sorted quickly.

Please don't change the water yourself, just get in touch if needed.

H O T T U B

hts

Spa Safety Advice



Shower With Soap & Water Before You Enter The Hot Tub



Senior Adults Must Consult A Doctor Before Use Of The Hot Tub



Anyone With Heart Disease, Diabetes High Or Low Blood Pressure Or Any Serious illness Must Consult A Doctor



Pregnant Woman Must Consult A Doctor Before Use Of The Hot Tub



Children Under The Age Of 5 Years Are Not Permitted In The Hot Tub

WARNING

Do Not Use Hot Tub While Under The Influence Of Alcohol, Tranquilisers Or Any Other Drugs That May Cause Drowsiness Or That Raise Or Lower Blood Pressure



Do Not Enter If Temperature Is Over 40°C



Enter & Exit The Hot Tub Slowly

CAUTION

If You Have Long Hair Please Tie It Up Or Wear A Swimming Cap (Don't Worry You'll Still Look Cool!)



Children Must Be Supervised At All Times



No Glassware Allowed In Or Near The Hot Tub



Please Do Not Use Soap Or Sun Lotions In The Hot Tub



Please No Jumping Or Diving. (Hot Tubs Are Not That Deep!)



Limit Your Soak to 15 Minutes, & Cool Off Before Re-Entering



Please Replace Spa Cover After Using The Hot Tub



Please Do Not Sit Or Lie Down On The Spa Cover

EASY HOW-TO'S

A few quick tips for things you might need during your stay.



Wi-Fi

The Wi-Fi code can be found at the front door and in the utility room.



Heating

Heating is by zone, adjust on control panel simply using the + and -.

No need to adjust anything else.



EASY HOW-TO'S



TV Remotes

- Switch on Freesat first and then use the TV remote to control



Bluetooth Speakers

Connect your phone by searching for: **LG PN7 (F4)**

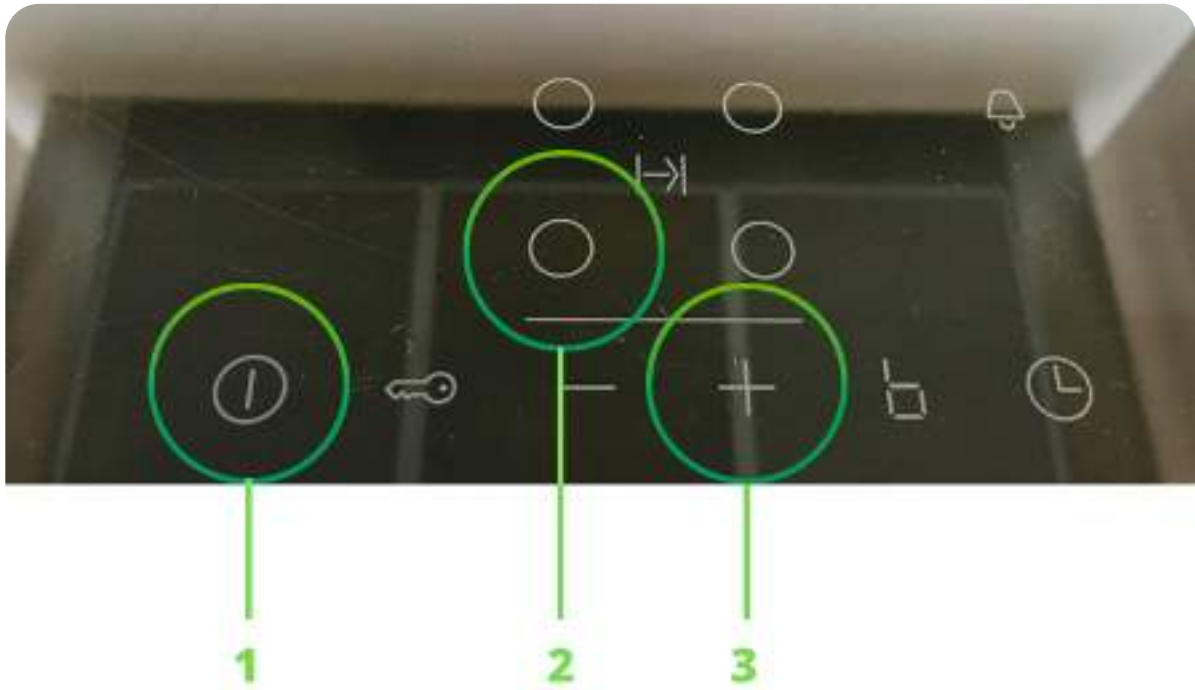
EASY HOW - T O ' S



Hob

Our induction hob works similarly to an electric hob, but it has coils beneath its surface that induce electrical current to generate heat in the pan or metal object.

For it to work you must place an induction pan or pot onto the hob.



1. Hold power button until hob turns on.
2. Select the ring you want to use and wait for the selection to show.
3. Press + or - to regulate the heat.
4. To turn hob off, hold power button (1) until lights turn off.



EASY HOW - T O ' S



Microwave Oven/Combi

Detailed instructions available on the inside of the cupboard door above the ovens.

- **For Microwave** - Press and rotate (left button) to www for Microwave, then use www below clock to change level, press and rotate (right button) for time, press >||
- **For Oven** – Press and rotate (left button) for further oven settings, then press and rotate (right button) for temp, Press >||



- **For Bottom Oven** – Press and rotate (left button) for further oven settings, then use right hand button for temperature



EASY HOW-TO'S



Dishwasher

1. Turn Dishwasher on (button furthest left)
2. Select program (Recommended: Eco)
3. Press <START> button (furthest right)
4. Close Dishwasher door



Washing Machine

- Detergents are on the top shelf in the utility room (child proof locks).
- Ideal mode is 40C Mixed Load and then press start



EASY HOW-TO'S



Towel Rails

Push button outside the bathroom to heat.



Towels

Extra Towels are available.

There is a charge for these. Should you require them please contact Graham.



EASY HOW-TO'S



Curains

All curains open & close using the cord. Please **do not** pull on the curains to open / close them.



Cleaning Materials

All cleaning materials are under the sink in the kitchen & utility room in the child proof cupboards.

Further materials are also on the top shelf in the utility room.



WASTE AND RECYCLING

Thank you for helping us look after the lodges and the surrounding countryside.



General Waste

- General waste bin is located in the kitchen



Recycling

- Recycling bins are located in the utility room
- Large bins are located at the top of the road (next to the Clovenstone Lodge sign)
- Please take recycling there during your stay



Important:

- Glass must be recycled by colour using the marked bins



A countryside note

Please avoid leaving rubbish outside the lodge, as wildlife can quickly make a mess of bags left outdoors.

LOCAL ESSENTIALS

A few useful places and services close to Clovenstone Lodges.



Taxis

When booking, please say Clovenstone Lodges, your lodge name, and AB51 0YS.

- Central Taxis – 01467 23 23 23
- Kintore Taxis – 01467 63 20 01
- Wee Dod's Taxis – 01467 62 14 86



Local Shops

- Morrisons – Inverurie
- Aldi – Inverurie
- Lidl – Inverurie
- Tesco – Inverurie
- Marshall's Farm Shop – Inverurie

LOCAL ESSENTIALS

Places to Eat



Scottish & Local

- The Cow Shed – Banchory
- Fennel – Inverurie
- Bennachie Lodge – Kemnay



Pub Grub

- Edwards – Inverurie
- The Drouthy Laird – Inverurie



Indian & Asian

- Echt Tandoori – Echt
- Rajpoot – Inverurie
- Everest – Blackburn



Cafés & Treats

- Marshall's Farm Shop – Blackburn
- Barra Café – Old Meldrum
- Forest Organic Farm – Blackburn
- Biccocchie's Ice Cream – Inverurie



Takeaways

- Panda Oriental Kintore
- Kintore Tandoori
- Garioch Fish Bar

W A T E R S U P P L Y

By law Clovenstone Lodges Ltd must advise that your water is provided from a private supply which complies with The Private Water Supplies (Scotland) regulations 2006.

The supply is regularly tested and fully compliant with the Private Water Supplies (Scotland) Regulations. The quality check standard is on display in the utility room.



If you experience any issues or have questions during your stay, please contact Graham.

EXPLORE MORE

From castles and coastlines to woodland walks and great food, Aberdeenshire has plenty to discover, all within easy reach of your lodge.



Want more ideas?

For full recommendations, directions and seasonal suggestions, visit:

www.clovenstonelodges.co.uk

www.visitabdn.com

B E F O R E Y O U G O . . .

We hope you enjoy your time at Clovenstone Lodges and leave feeling relaxed and refreshed.



Book direct & save

If you'd like to return in the future, the best prices are available direct online at:

www.clovenstonelodges.co.uk



Looking for something a little more intimate?

Alongside our larger lodges, Clovenstone also offers a collection of luxury mini lodges, perfect for couples.

If you're planning a future escape and would prefer something more compact, with the same attention to comfort and detail, we'd be happy to help.



Share your stay

If you've taken any photos during your stay, we'd love to see them.

Feel free to share and tag us on:



Facebook **@Clovenstonelodges**

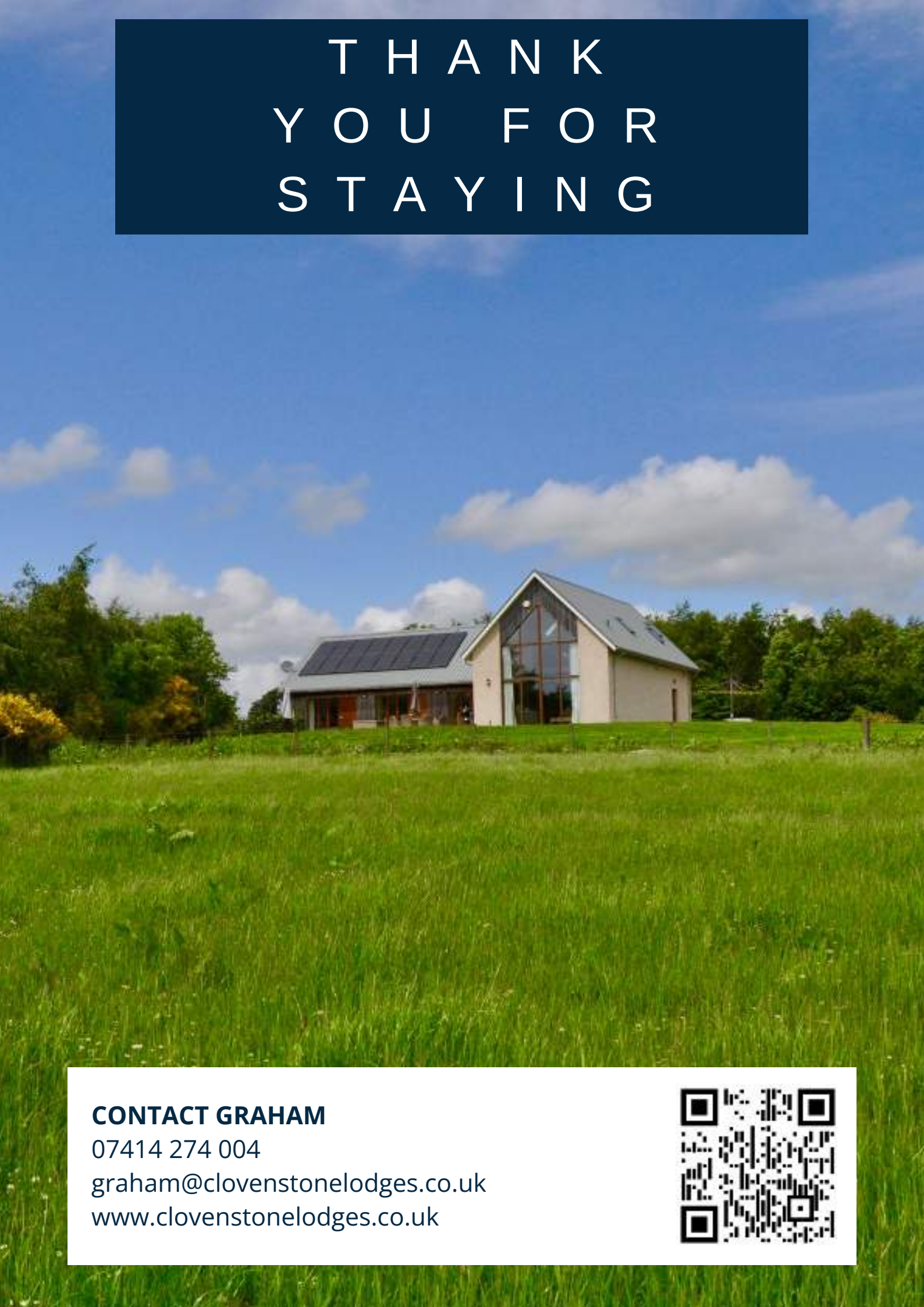


Instagram **@clovenstone_lodges**

Until next time

Thank you again for choosing Clovenstone Lodges, we hope to welcome you back again soon.

THANK
YOU FOR
STAYING



CONTACT GRAHAM

07414 274 004

graham@clovenstonelodges.co.uk

www.clovenstonelodges.co.uk

